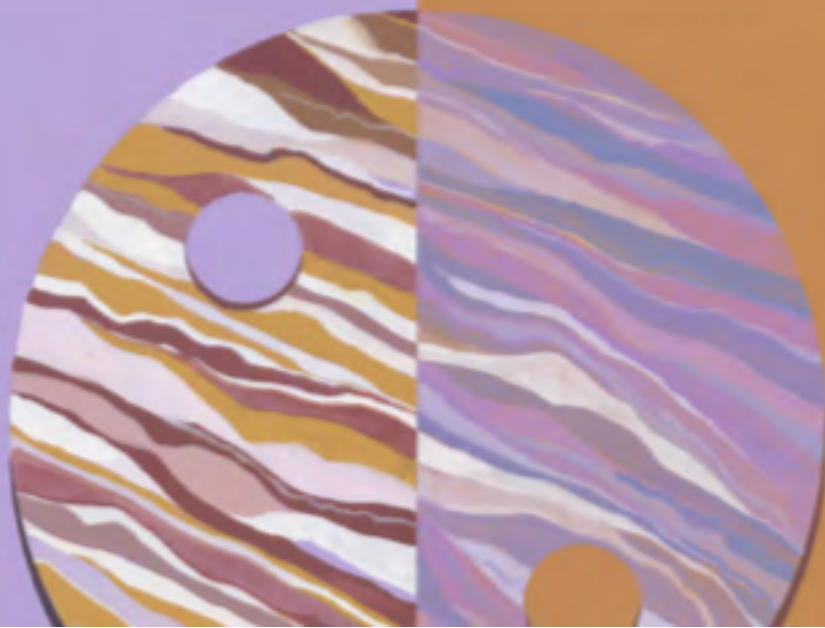


The cover features a photograph of a garden scene. In the foreground, there is a clump of tall, thin, blue-green grasses. Behind them, several purple flowers are in bloom, some on tall stems and others lower down. The background is a soft-focus, light-colored wall or fence. The entire image is framed by dark grey geometric shapes: a large white-outlined 'V' at the top left, a white-outlined 'A' at the top right, and a white-outlined 'V' at the bottom right. The title 'VIOLA GARDENS' is printed in large, white, sans-serif capital letters across the middle of the image.

VIOLA GARDENS

CA NATIVE
POLLINATOR
GUIDEBOOK



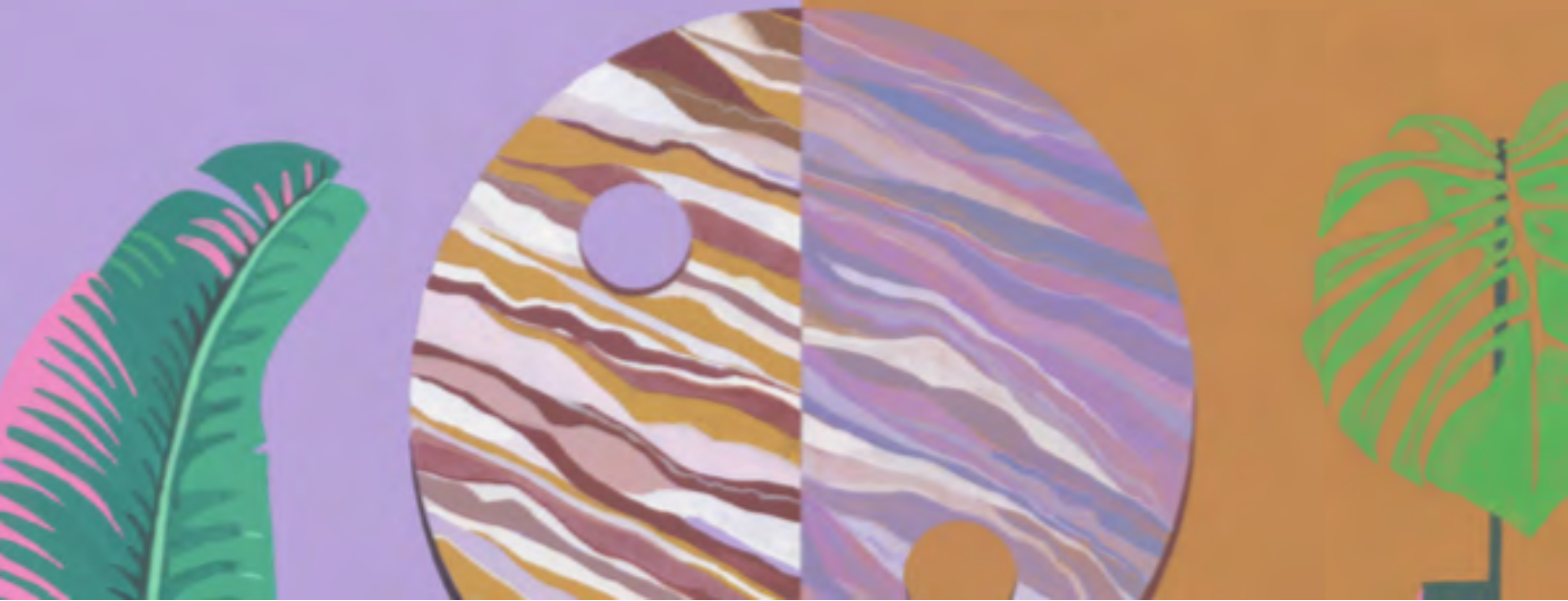
VIOLA GARDENS DESIGN

Jessica Viola is one of Southern California's most sought after landscape designers, having spent the past two decades cultivating a design portfolio based on regenerative, whole-system solutions and artistic vision.

Jessica is likewise one of just a few fully licensed, bonded and female landscape contractor's in the state of California. Her in-house design crew is currently fully women led and all team members are certified in Permaculture Design.

HABITAT RESTORATION
INSPIRE TO PLANT NATIVE
COMPANION PLANTING

Forging a connection between people and nature...





HUMMINGBIRD GARDENS

MEET OUR BEAUTIFUL HUMMINGBIRD FRIENDS &
THE PLANTS THEY LOVE & NEED



Anna's
Hummingbird



Allen's
Hummingbird



Black-chinned
Hummingbird



Costa's
Hummingbird



HUMMINGBIRD GARDENS

MEET OUR BEAUTIFUL HUMMINGBIRD FRIENDS &
THE PLANTS THEY LOVE & NEED



California fuchsia (*Epilobium canum*), Showy Penstemon (*Penstemon spectabilis*), Manzanita (*Arctostaphylos* sp.), Bladderpod (*Peritoma arborea*), Scarlet Bugler (*Penstemon centranthifolius*), Fuchsia Flowered Current (*Ribes speciosum*), Woolly Blue Curls (*Trichostemma lanatum*).

BUMBLEBEE GARDENS

MEET OUR BEAUTIFUL BUMBLEBEE FRIENDS &
THE PLANTS THEY LOVE & NEED



Yellow-faced
Bumblebee



California
Bumblebee



Black-tailed
Bumblebee



Crotch's
Bumblebee

BUMBLEBEE GARDENS

MEET OUR BEAUTIFUL BUMBLEBEE FRIENDS &
THE PLANTS THEY LOVE & NEED



White Sage (*Salvia apiana*), Purple Sage (*Salvia leucophylla*), Black Sage (*Salvia mellifera*), California Hedgenettle (*Stachys bullata*), Manzanita (*Arctostaphylos* sp.), Purple Nightshade (*Solanum xanti*), Chaparral Current (*Ribes malvaceum*).

LIVE OAK WOODLAND BIRD GARDENS

MEET OUR BEAUTIFUL BIRD FRIENDS &
THE PLANTS THEY LOVE & NEED



Acorn
Woodpecker



Western
Screech-Owl



Dark-eyed
Junco



Oak
Titmouse

LIVE OAK WOODLAND BIRD GARDENS

MEET OUR BEAUTIFUL BIRD FRIENDS &
THE PLANTS THEY LOVE & NEED



Coast live oak (s,h), Toyon (f,h) California Wild Rose (f,h)
Wild strawberry (f) Fuchsia-flowered Gooseberry (f,n)
Hummingbird Sage (n) Oregon grape (f,n)

f = Fruit, n = nectar, s = seeds, h = habitat for nesting or hiding

CHAPARRAL BIRD GARDENS

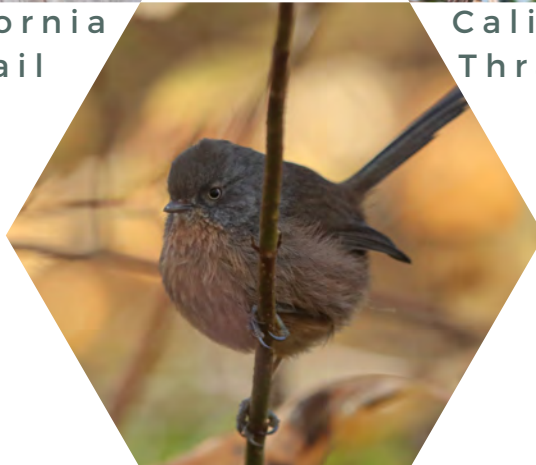
MEET OUR BEAUTIFUL BIRD FRIENDS &
THE PLANTS THEY LOVE & NEED



California
Quail



California
Thrasher



Wrentit



Golden-crowned
Sparrow



Spotted
Towhee

CHAPARRAL BIRD GARDENS

MEET OUR BEAUTIFUL BIRD FRIENDS &
THE PLANTS THEY LOVE & NEED



Ceanothus (h, s) Coyotebrush (h, s) Manzanita (f,n,h)
California buckwheat (s,h) California sagebrush (s,h)
Hollyleaf redberry (f) Giant wild rye (s)

f = Fruit, n = nectar, s = seeds, h = habitat for nesting or hiding

WILDFLOWER MEADOW BIRD GARDENS

MEET OUR BEAUTIFUL BIRD FRIENDS &
THE PLANTS THEY LOVE & NEED



Lesser
Goldfinch



White-crowned
Sparrow



Black Phoebe



Bushtit

WILDFLOWER MEADOW BIRD GARDENS

MEET OUR BEAUTIFUL BIRD FRIENDS &
THE PLANTS THEY LOVE & NEED



Penstemon (n), California Aster (s)
Cobwebby Thistle (s,n), California brittlebush (s,h),
California fuchsia (n), Chia (*Salvia columbariae*) (s)
Fiddleneck (*Amsinckia* sp.) (s)

f = Fruit, n = nectar, s = seeds, h = habitat for nesting or hiding

SYCAMORE WOODLAND BIRD GARDENS

MEET OUR BEAUTIFUL BIRD FRIENDS &
THE PLANTS THEY LOVE & NEED



Nuttall's
Woodpecker



Phainopepla



Song Sparrow



Ash-throated
Flycatcher

Black-headed Grosbeak

SYCAMORE WOODLAND BIRD GARDENS

MEET OUR BEAUTIFUL BIRD FRIENDS &
THE PLANTS THEY LOVE & NEED



Western Sycamore (s,h), Blue elderberry (f,h), Trailing
blackberry (f,h) Golden-flowered Current (f,n) Carex (s),
Chaparral bush mallow (n,s) Canyon sunflower (s,h)

f = Fruit, n = nectar, s = seeds, h = habitat for nesting or hiding



indian mallow



penstemon



california milkweed

A Special Thank You to our Consulting Ecologist,
Andy Kleinhesselink



www.violagardens.com

A Hundred Bells: Understanding
Patterns in Nature on the Path to
Empowerment

A Book by Jessica Viola
<https://www.ahundredbells.com>